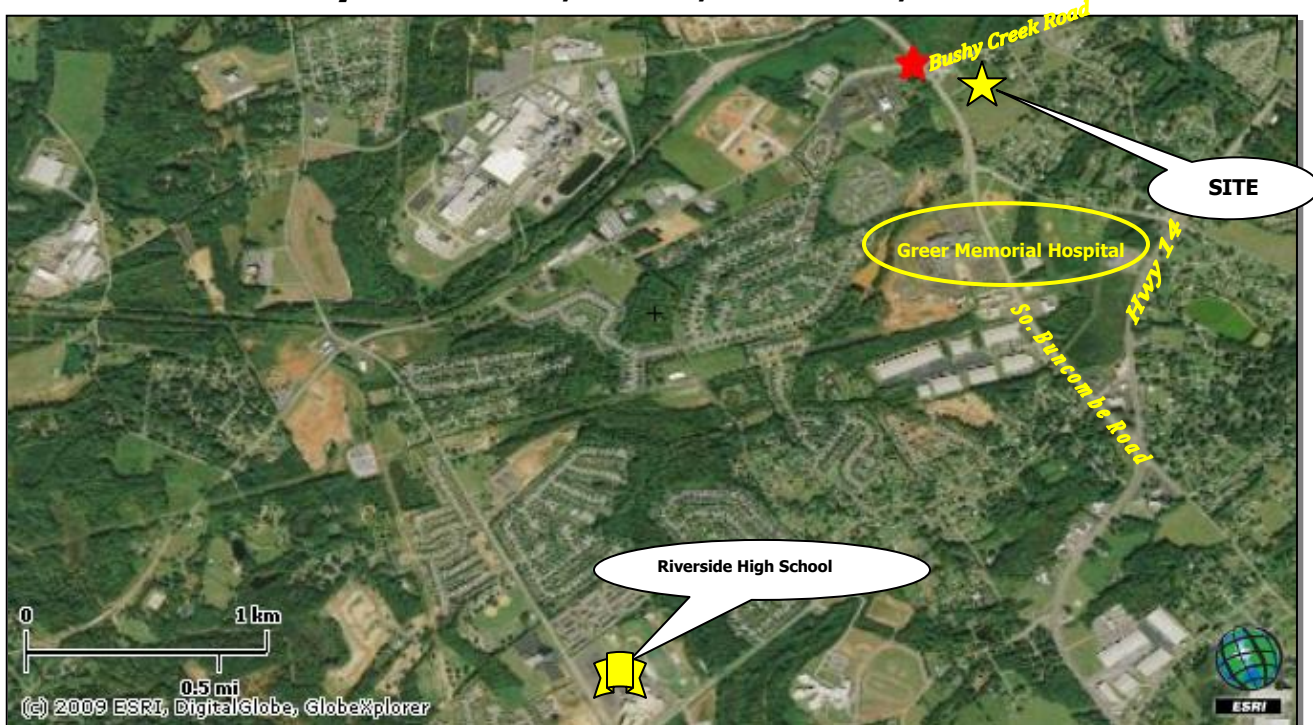


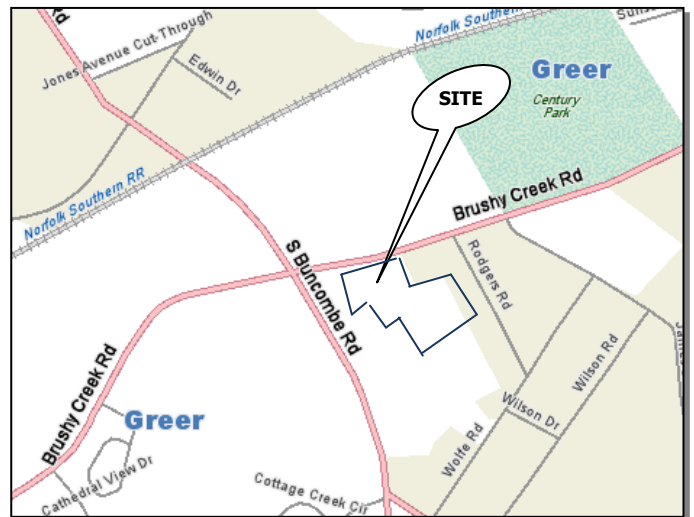
FOR SALE

Land

Brushy Creek Rd., Greer, SC Greer, SC 29650



- Great location for Medical / General Office, Retail Center / Big Box and Self-storage
 - Size: 5.1 +/- acres
 - Near the New Greer Memorial Hospital
 - Utilities to site: gas, water, power (sewer available)
 - Demographics
- | | 1 Mile | 3 Miles | 5 Miles |
|-------------------|----------|----------|----------|
| Population | 3,865 | 34,936 | 82,028 |
| Average HHI | \$57,492 | \$63,780 | \$74,404 |
| Vehicles per day: | 20,000 | | |
- Greenville County tax map# G005000200202
 - Reciprocal cross-easement to South Buncombe Rd.



Asking Price: \$249,900 p/Acre

Rodger Willoughby rodger@keystonesc.com

Jim Hopple, CCIM jim@keystonesc.com

VIEW THIS PROPERTY AT:
www.keystonesc.com

Keystone Commercial Group, LLC
451 Haywood Rd.
Greenville, SC 29607

Information contained herein has been obtained from the owners or from other sources deemed reliable. We have no reason to doubt its accuracy, but we regret we cannot guarantee it. All properties subject to change or withdrawal without notice.

Office: 864.297.4955
Fax: 864.297.6207

**KEYSTONE**
THE AUTHORITY IN COMMERCIAL REAL ESTATE